



**ECONOMODE**  
Food Equipment (India) Pvt. Ltd.

complete solution for  
snack food industry



- | Fully Automatic Potato Chips Line | Fully Automatic Mini Potato Chips Line
- | Semi Automatic Potato Chips Line | Fully Automatic Kurkure Production Line
- | Pellet Frying Line | Multi Product Continuous Frying Systems
- | Circular & Rectangular Batch Fryer

*Save Energy...Save Money!*



## Company Profile

Economode Food Equipment (India) Private Limited, promoted by Mr. Arun Dadda a B-Tech in Food Technology, is incorporated as a Private limited company with ROC Maharashtra in 2004 and based at Thane. Mr. Dadda and his core team of Food-technocrats have pooled their technical prowess, extensive experience and continuous research to develop a superior technology that is highly innovative and cost effective for manufacturing machines for the Snack Food Industries. Economode offers a complete line of machines for different processes and capacities like Batch Type, Semi Automatic / Fully Automatic machines, for Potato chips line, Banana chips line, Pellet lines, Peanuts line, Kurkure lines and Frying systems giving comprehensive, customized solutions and services to Snack Food manufacturers.

## Vision

To be the world leader in delivering latest and high technology machines and equipments, solutions and services for snack food Industry to value add and enhance the customer delight and to be associated with research opportunities to improve value added end-to-end services & products to the snack food industry.

## Mission

Providing tradition of excellence in snack food equipments, exceeding our clients expectations and get recognition locally and globally through:

- Building robust client loyalty
- Providing customized solutions
- Adopting optimal engineering methodologies to lessen the time of production, dependency on human resources and strengthen best quality and quantity working conditions, hygiene etc.

## Infrastructure

We uphold a state-of-the-art Infrastructure base which conforms to the standards of international level in terms of various kinds of facilities. Our manufacturing unit is spread over a total plot area of 25000 sq. ft. with optimum install capacity that is sufficient to prove in the terms of robust infrastructure.

We have equipped this spacious unit with necessary machines and equipments that facilitate flawless production of our wide range of food processing machines.

## Value

In order to realize our vision through the mission on hand, Economode ensures that every choice, decision and action is based upon the following core values

**Commitment:** We are committed to the best quality standard of our equipment and constantly introspect and improve our insight into the market place and the real needs of customers of snacks food industry. We are committed to teamwork and partnership with employees, shareholders, customers and the community.

**Concern:** We are all empowered to demonstrate care and concern for others in everything we do and shall be, careful not to cause any harm through our attitudes, words or actions either directly or indirectly.

**Quality:** We shall constantly strive to improve upon our products and services and shall innovate in doing things better such that total quality is achieved in every sphere of activity

## Director's Message



Dear Clients

Just in a decade ECONOMODE has equipped and established itself as a leader in developing and delivering highly innovative, cost effective Snacks Food Processing Machines and Equipment on the basis of its continuous Efforts, Research & development, and highly dedicated resources.

We have organized ourselves in all segments of the products from batch type, Semi-automatic to Fully Automatic Lines for the Snacks Food Industry.

We believe that technology holds the key to success and therefore we are committed for delivering the same at our end. We are committed to total customer satisfaction by identifying their specific needs, translating them into innovative products.

Selecting a right business partner who can work with your vision, able to deliver customized solutions while increasing the process efficiency is our forte. When you choose ECONOMODE as your partner you get access to our innovative products, solutions and services.

On behalf of Economode, I therefore, seek continuous patronage of our valued customers, cooperation of our team and thank our well-wishers who have kept their confidence with us and contributed to the growth of the organization.



Arun Dadda



## Fully Automatic Potato Chips Line

The fully automatic Potato Chips line is a continuous processing arrangement, which is suitable for processing of Potato.

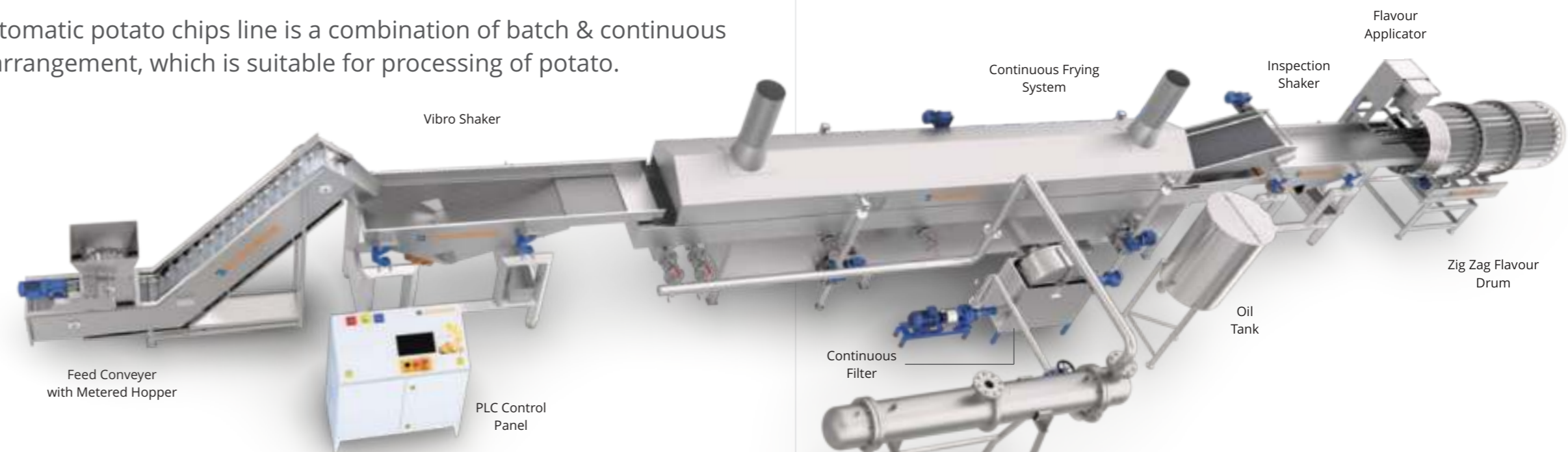


### Technical Specifications

Model	Fully Automatic Potato Chips Line			Semi Automatic Potato Chips Line	
	FAPCL - 300	FAPCL - 500	FAPCL - 1000	SAPCL - 100	SAPCL - 200
Output	300 Kg/ Hr	500 Kg/ Hr	1000 Kg/ Hr	100 Kg/ Hr	200 Kg/ Hr
Edible Oil Holding Capacity	900 Ltrs	1600 Ltrs.	3000 Ltrs	550 Ltrs	750 Ltrs
Power Required with Blancher	65 HP	85 HP	122 HP	NA	NA
Power Required without Blancher	52 HP	65 HP	102 HP	19HP	22HP
Water Required	2000 Ltrs / Hr	3500 Ltrs / Hr	6000 Ltrs / Hr	500 Ltrs / Hr	1000 Ltrs / Hr
Floor Space	3000 sq ft	4000 sq ft	5000 sq ft	1200 sq ft	1500 sq ft
Length of the Line	140 ft	160 ft	160 ft	51 ft	55 ft
Material of Construction	AISS-304	AISS-304	AISS-304	AISS-304	AISS-304

## Semi Automatic Potato/Banana Chips Line

The semi automatic potato chips line is a combination of batch & continuous processing arrangement, which is suitable for processing of potato.



### Special Features

**Optimal Automation**  
It is an economy line in which all major operations are automated except peeling and slicing.

**Frying Control**  
Specially engineered multi oil inlets maintain positive oil flow to clear the product infeed area & provide precise control of temperature & rapid adjustment to feed change.

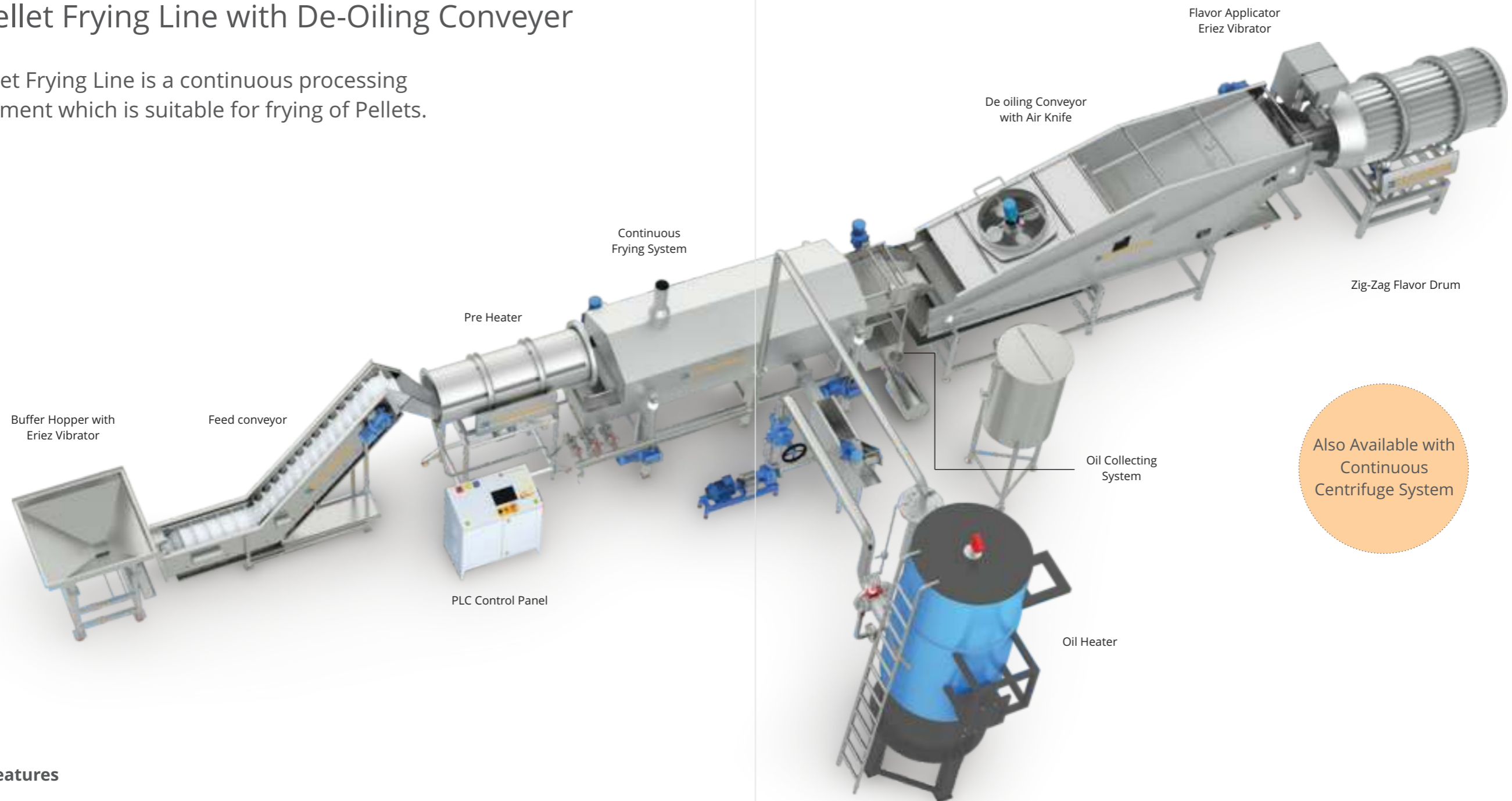
**Continuous Filtration**  
Circulating oil keeps fines in suspension for efficient removal. Every minute 100% of the system oil volume passes through drum filter to remove product particles for the highest oil & product quality.

**Oil Quality**  
Low oil volume and rapid oil turnover assure fresh product with a long shelf life. Optimal level is automatically maintained.

**Compact Design**  
Compact design results into cost efficient operations by reducing space, energy & water usage.

## ■ Pellet Frying Line with De-Oiling Conveyor

The Pellet Frying Line is a continuous processing arrangement which is suitable for frying of Pellets.



Also Available with  
Continuous  
Centrifuge System

### Special Features

**Pre Heater**  
Indigenously developed pre heater ensures maximum expansion & minimum oil absorption inspite of variation in shape, size & moisture of raw pellets.

**De-Oiling Conveyor**  
Specially engineered, step take out belt & two step De-oiling belt ensures optimal oil removal from the product.

**Continuous Filtration**  
Circulating oil keeps fines in suspension for efficient removal. Every minute 100% of the system oil volume passes through drum filter to remove product particles for the highest oil & product quality.

**Oil Quality**  
Low oil volume and rapid oil turnover assure fresh product with a long shelf life. Optimal level is automatically maintained.

**Compact Design**  
Compact design results into cost efficient operations by reducing space & energy usage.



Model	PFL - 500	PFL - 1000	PFL - 2000
Output	500 Kg/ Hr	1000 Kg/ Hr	2000 Kg/ Hr
Edible Oil Holding Capacity	500 Ltrs	800 Ltrs	1200 Ltrs
Power Required	20 HP	25 HP	30 HP
Floor Space	1500 sq ft	1800 sq ft	2000 sq ft
Length of the Line	60 ft	65 ft	65 ft
Material of Construction	AISS-304 Grade SS	AISS-304 Grade SS	AISS-304 Grade SS

## Fully Automatic Kurkure Production Line

The fully automatic Kurkure production line is a continuous processing arrangement, which is suitable for frying of Kurkure (Nick-Nack)

### Special Features

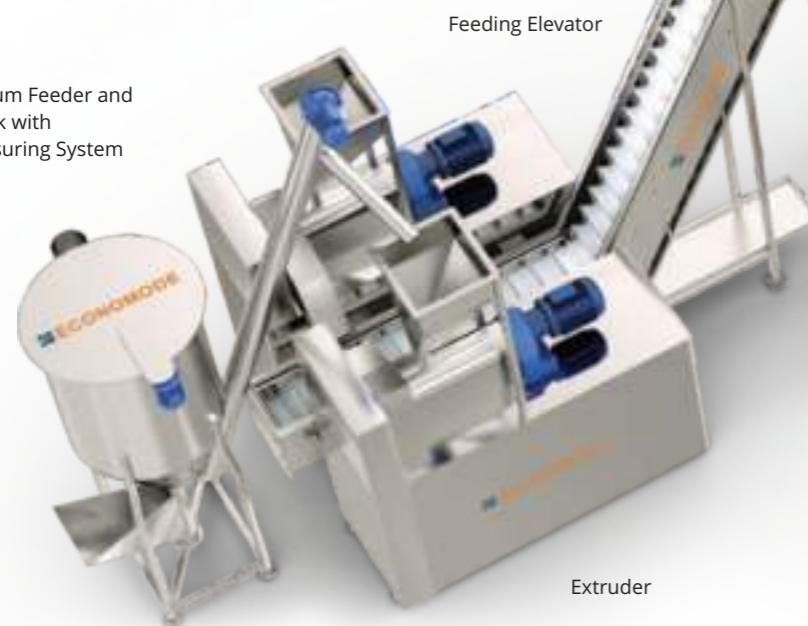
#### Frying Control

Specially engineered multi oil inlets maintain positive oil flow to clear the product infeed area & provide precise control of temperature & rapid adjustment to feed change.

#### Continuous Filtration

Circulating oil keeps fines in suspension for efficient removal. Every minute 100% of the system oil volume passes through drum filter to remove 100% product particles for the highest oil & product quality.

Grit Mixer Cum Feeder and Tank with Water Measuring System



Feeding Elevator

Rotary Siever

Hopper with Eriez Vibrator

PLC Control Panel

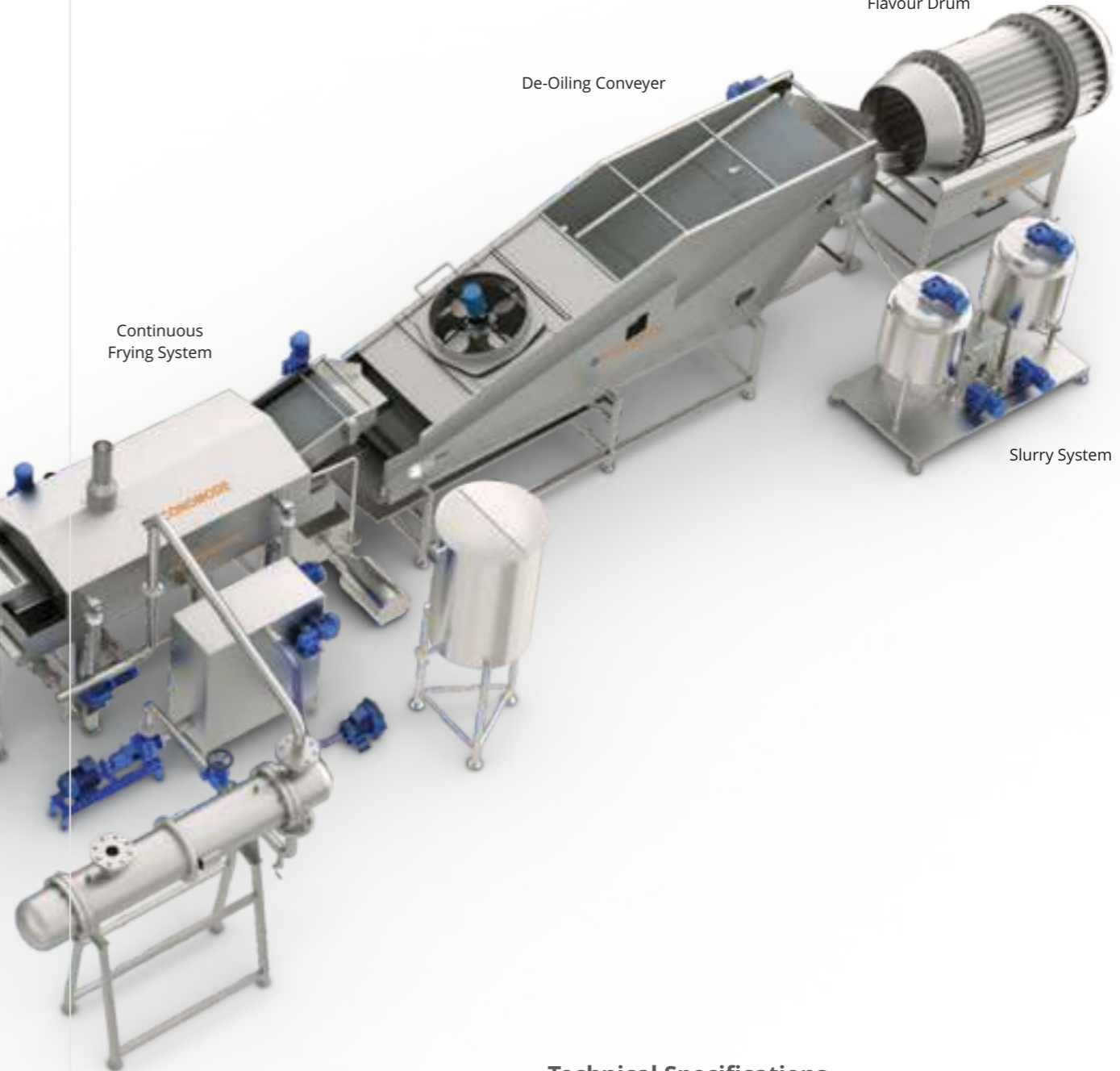
Extruder

Continuous Frying System

De-Oiling Conveyer

Zig Zag Flavour Drum

Slurry System



#### Oil Quality

Low oil volume and rapid oil turnover assure fresh product with a long shelf life. Optimal level is automatically maintained.

#### Buffer Hopper

It ensures constant feed to fryer despite any small change in extruder output.

#### Slurry System

Seasoning is added to the product using nozzles in the zig-zag drum to get mixed with the collates. Specially designed zig-zag drum & controlled slurry application ensures uniform coating.

### Technical Specifications

Model	FAKPL - 300	FAKPL - 500
Output	300 Kg/ Hr	500 Kg/ Hr
Edible Oil Holding Capacity	250 Ltrs.	450 Ltrs.
Power Required	75 HP	90 HP
Floor Space	1500 sq ft	2000 sq ft
Length of the Line	71 ft	75 ft
Material of Construction	AISS-304 Grade SS	AISS-304 Grade SS

## Other Food Processing Lines

- Multi Product Continuous Frying System
- Coated Peanut Line
- Moong Dal Frying Line
- Sev Murmura Line
- Corn Puff Line

## Potato / Banana Chips Machine Accessories

- Potato Peeler
- Potato Slicer
- Hydro Machine
- Flavoring Machine
- Banana Slicer

## Namkeen Accessories

- Nylon Sev Extruder
- Continuous Sev Extruder
- Boondi Attachment
- Sing Bhajia Attachment
- Spiral Dough Mixer
- Nakeen Mixer
- Dal Washer
- Namkeen Extruder
- Vibro Shifter

## Other Accessories

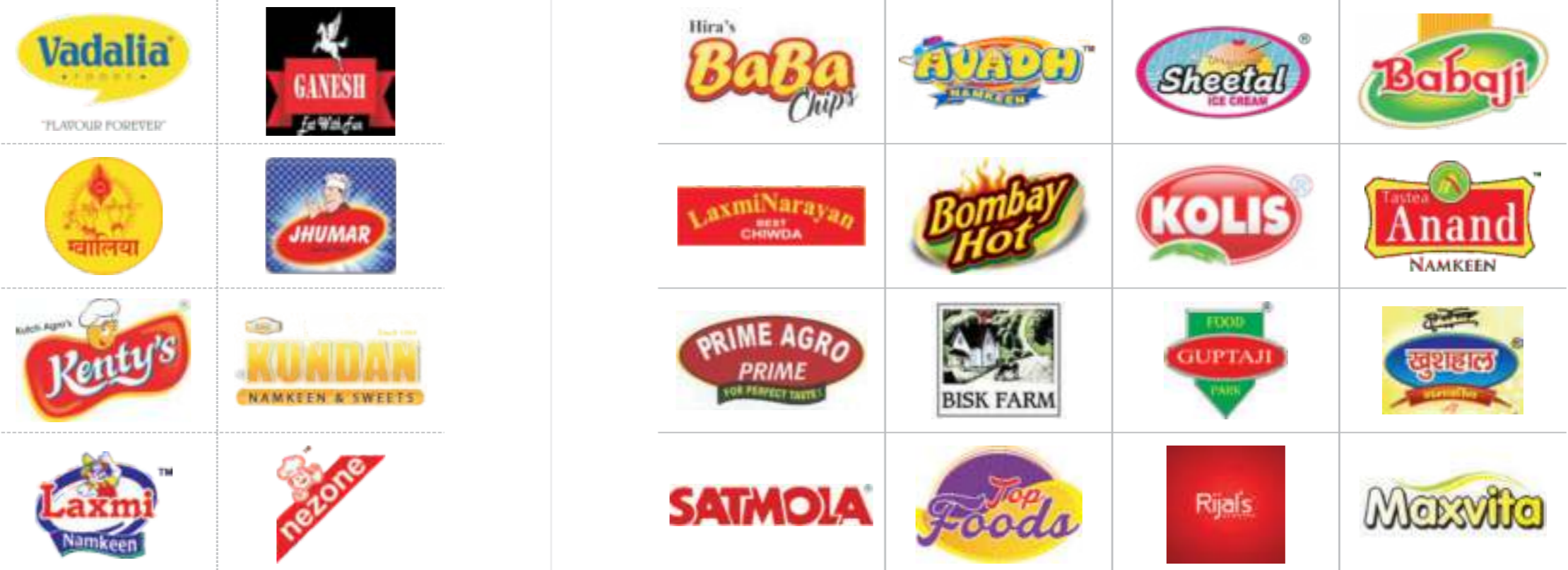
- Coating Pan With Hot Air
- Slurry System

## Esteemed Customers

### International Brands



### Indian Brands



# Global Presence



## ECONOMODE

Food Equipment (India) Pvt. Ltd.

CIN No. U29250MH2004PTC144122



**Registered Office :** Unit M, Kothari Warehouse No. 3,  
 27 Acre, Tikuji-ni-Wadi Road, Chitalsar, Manpada,  
 Thane (W) 400 607, Maharashtra. INDIA  
 Website : [www.economodefood.com](http://www.economodefood.com) / [www.economode.in](http://www.economode.in)

**Domestic Enquires :**  
 +91 95949 67802 / 88792 70383  
 E-Mail : [sales@economodefood.com](mailto:sales@economodefood.com) /  
[enquiry@economodefood.com](mailto:enquiry@economodefood.com)

**International Enquires :**  
 +91 84520 04001 / +91 88792 70751  
 E-Mail : [export@economodefood.com](mailto:export@economodefood.com)

**Business Development:**  
 +91 93240 68741

Find us on: [facebook.com/economode](https://facebook.com/economode)